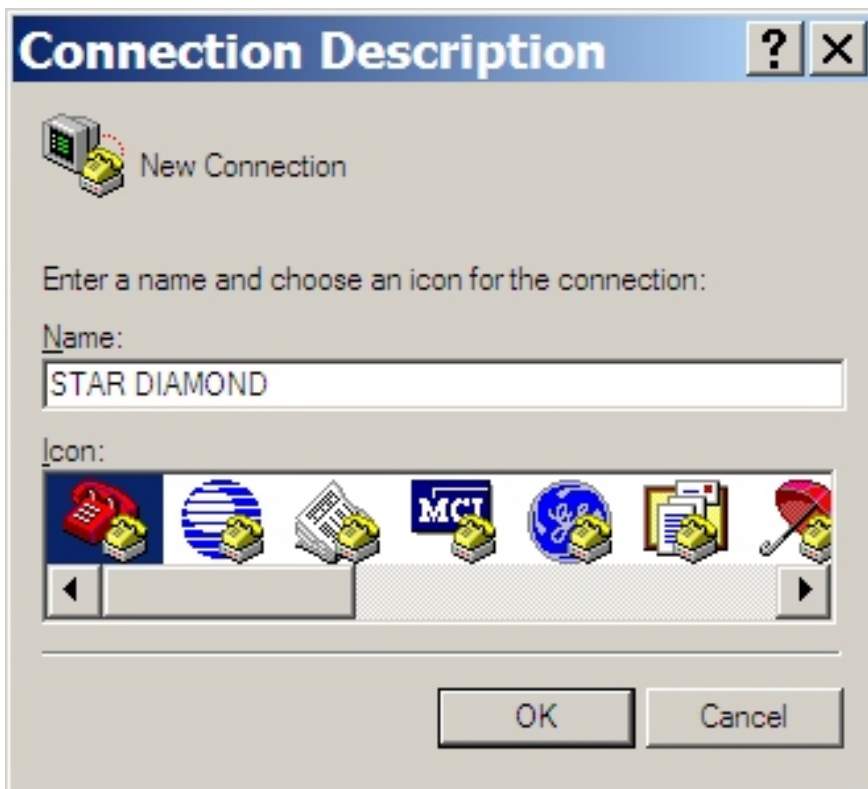


HYPERTERMINAL SETUP

This instruction explains how to setup your HyperTerminal program for the connection of the Star Diamond or the Star Sapphire to your PC.

1. Connect the Star Sapphire or the Star Diamond to your PC using the cable that was delivered together with your chess computer. Please remember the comport you have used to connect your chess computer, e.g. COM1. Please also make sure that the chess computer is turned OFF during the setup procedure.
2. Start the HyperTerminal program:
 - Click on START
 - Click on PROGRAMS
 - Click on ACCESSORIES
 - Click on COMMUNICATIONS
 - Click on HYPERTERMINAL
3. A screen will pop up saying CONNECTION DESCRIPTION:



4. Please enter a name for this connection, e.g. STAR DIAMOND and click OK.
Note: when you want to use the HyperTerminal program next time, just click on the HyperTerminal connection called STAR DIAMOND.

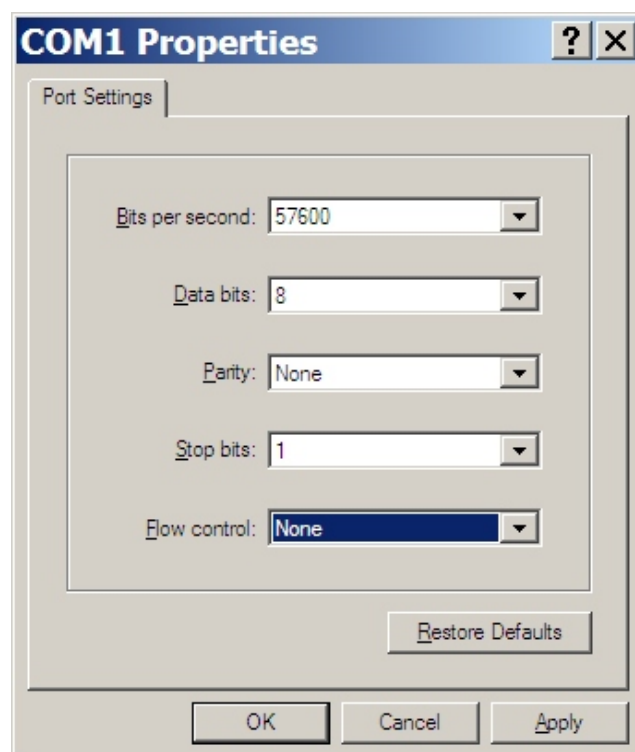
5. A new screen will pop up called "CONNECT TO". Please chose under "CONNECT USING" the comport you have used to connect your chess computer to the PC (e.g. COM 1) and click OK



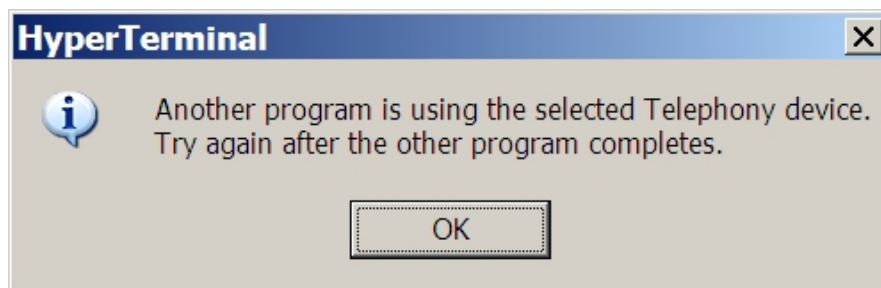
6. A new screen will pop up called "COM1 PROPERTIES". Please make sure the settings are as follows:

BITS PER SECOND:	57600
DATA BITS:	8
PARITY:	NONE
STOP BITS:	1
FLOW CONTROL:	NONE

Click APPLY and then OK



7. Your HyperTerminal program is now set up and ready to use. Should you receive the following ERROR message, close any other program that might be in use such as Palm HotSync.



8. Turn your chess computer ON and press NEW GAME on the chess computer or NG ENTER on your PC keyboard to begin.

Palm HotSync is a registered name.